

Parks, Recreation & Cultural Services

PR&CS Administration, 1401 Recreation Way, Colorado Springs, CO 80905



Agenda TOPS Working Committee

Wednesday, November 1, 2023

7:30 a.m.

1401 Recreation Way

How to call in to the meeting for citizens:

Please dial +1 (720) 617-3426 Conference ID: 494 055 957#

How to comment:

- *For Citizen Discussion concerning items that are not on the agenda please email your comments to TOPSWorkingCommittee@coloradosprings.gov in advance of the meeting.*
- *For Agenda Items - Before the meeting, those who wish to comment should submit their name, telephone number, and the topic or agenda item for comment to TOPSWorkingCommittee@coloradosprings.gov. If you are a participant in Microsoft TEAMS please use the chat function to indicate you would like to comment. If you have joined the meeting via conference call, please listen for your opportunity to comment. You will be called upon to comment using the last four digits of your telephone number. Please limit your comment to three minutes.*

Agenda Preview

Committee Chair

Announcements

Staff and Committee

Approval of Minutes

Committee

Citizen Discussion

Citizens

Action Items

Presentation Items

Wayfinding Installation Update

David Deitemeyer

Austin Bluffs Open Space Project Update

David Deitemeyer

Fishers Canyon Master Plan Introduction

David Deitemeyer

Citizen Discussion

Citizens

Adjournment

OPEN SPACE WAYFINDING UPDATE



TOPS Working Committee

11/01/23

David Deitemeyer – Design and Development

WELCOME SIGNS

Identifies the property

Consistent Welcome

Proposed at Main
Entrance(s) & Trailhead

Installed at Bluestem Prairie,
High Chaparral, Blodgett
and Stratton Open Spaces



KIOSK

WOW – Welcome, Orientation and
Wayfinding

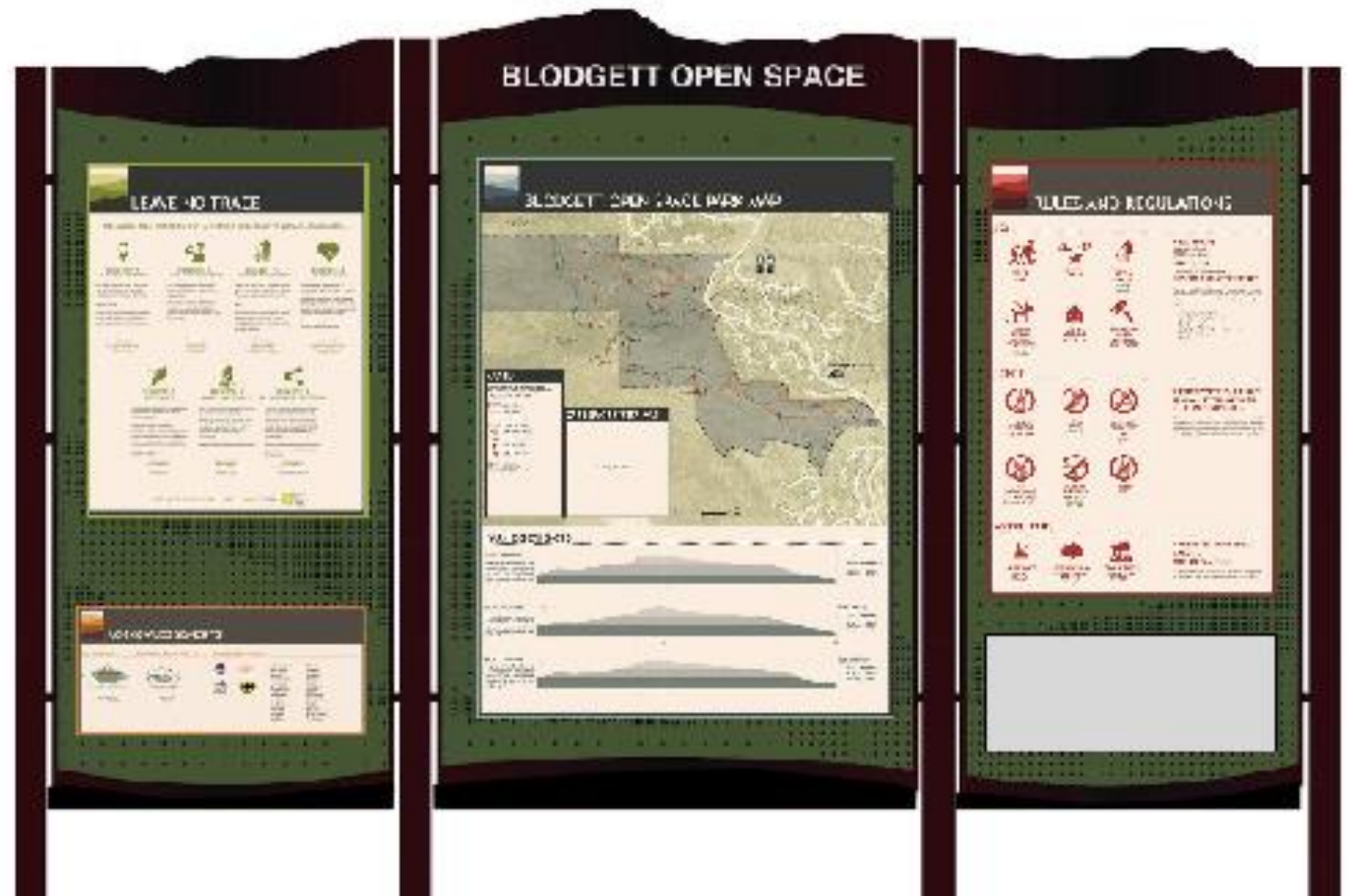
Single point of information

At main Trailheads and Access
Points

Production underway

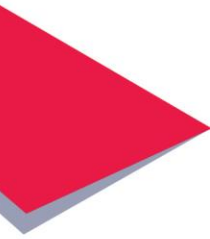
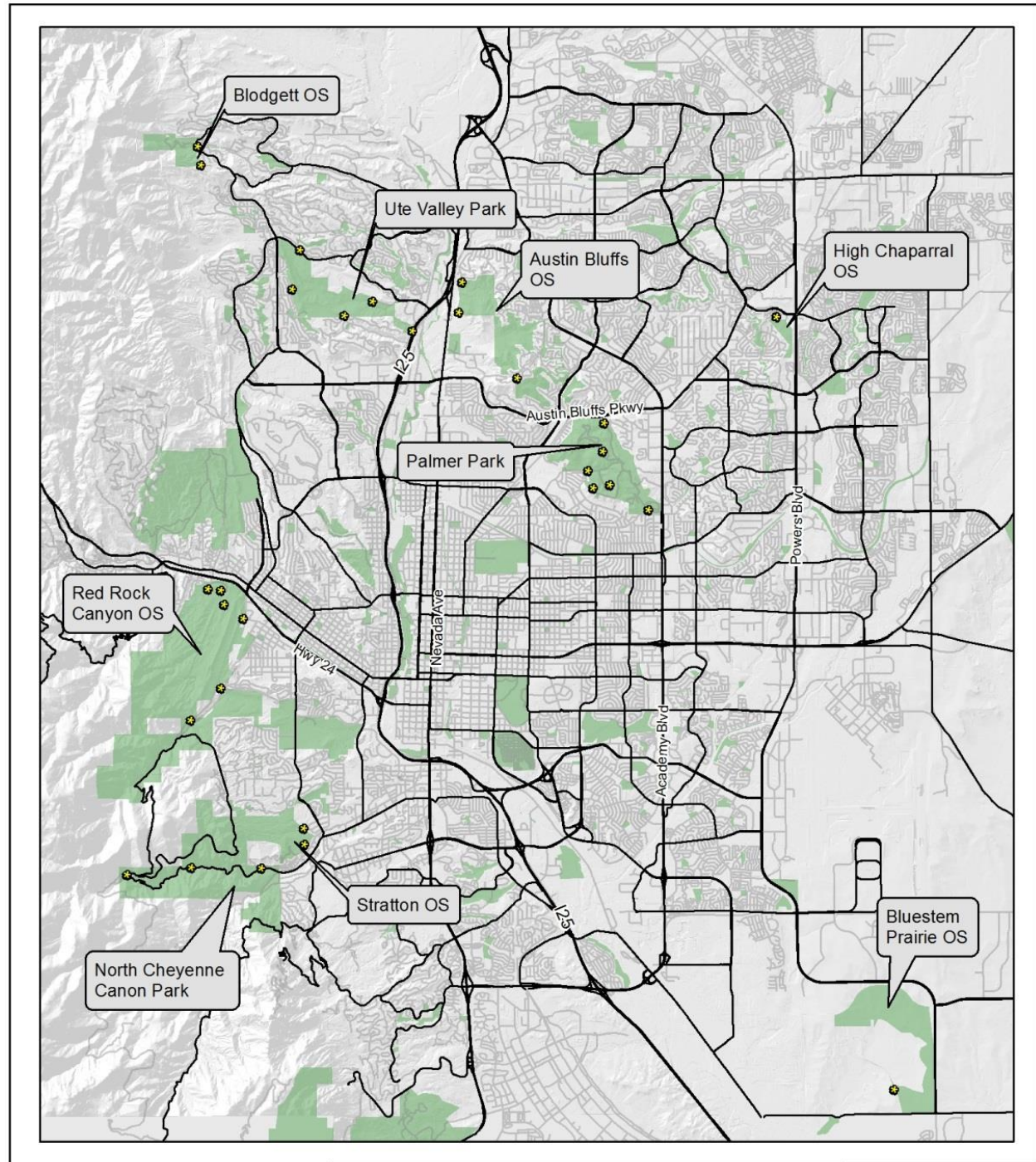
Fabrication Art (digital files)

Construction drawings for
site plans



KIOSK

Locations



WAYFINDING POST

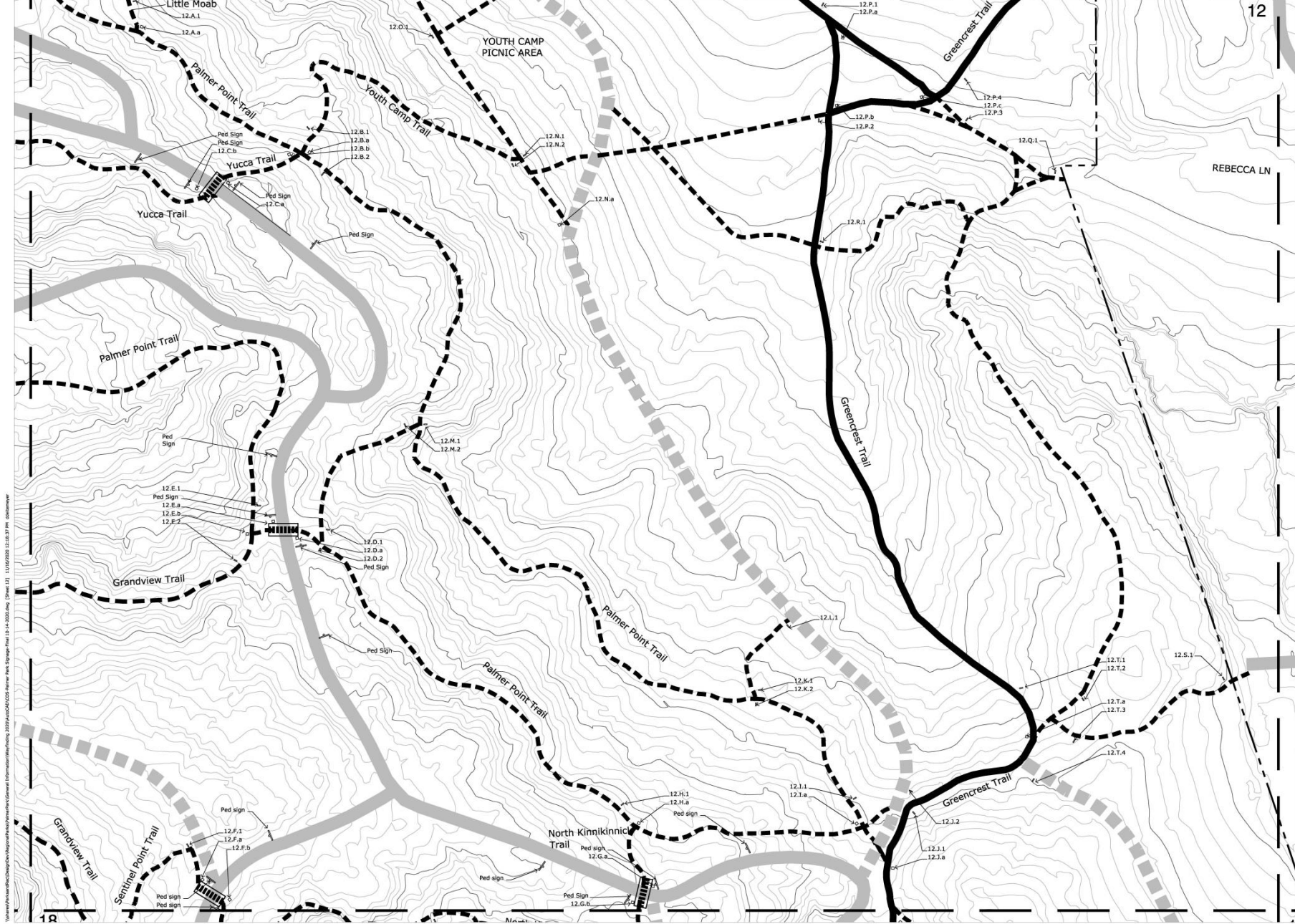
Trail-side Markers

Trail name identification and route finding

Wayfinding benefits include:

- Sense of place
- Concise messaging
- Discourages social trails
- Improved navigation and user experience
- Critical for emergency and first responders
- Maintenance needs and reporting issues



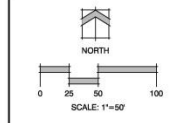


COLORADO SPRINGS
OLYMPIC CITY USA

park - recreation - cultural services

Design and Development & TOPS
1401 Recreation Way
Colorado Springs, CO 80905
Tel. 719.385.6540
Fax 719.385.6599

© 2012. All Rights Reserved.



**Palmer Park
Wayfinding Improvements**

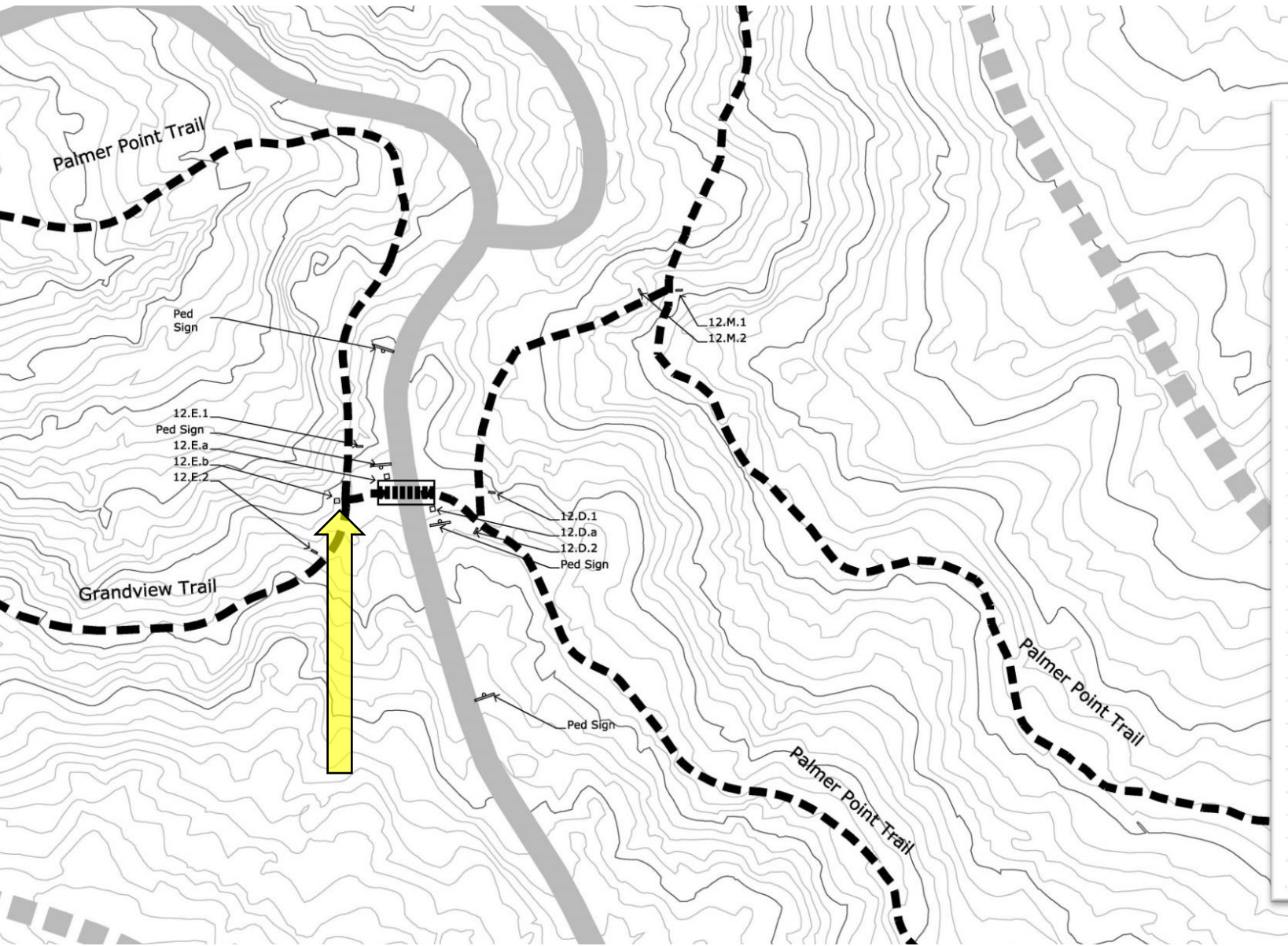
1	2	3		
6	5	4		
7	8	9	10	11
15	14	13		
16	17	18	19	
23	22	21	20	
24	25	26		

PROJECT NO: 11/16/09
DATE: 11/16/09
PROJECT MGR: D. DeBemeyer
PREPARED BY:

DATE	BY	DESCRIPTION

S12
OF





12.E.b	S12	PPT left arrow
	S12L	GVT up arrow
		TO CHEYENNE TRAIL small up arrow
		TO GRANDVIEW OVERLOOK small up arrow
	L	TO NORTH KINNIKINICK TRAIL small left arrow
	S3	PPT right arrow
	S3L	GVT left arrow
		TO NORTH CANON TRAILHEAD small right arrow
		TO CHEYENNE TRAIL small left arrow
	L	TO SOUTH CANON TRAIL small left arrow
	S6	PPT up arrow and right arrow
		TO NORTH KINNIKINICK TRAIL small right arrow
12.F.a		TO GREENCREST TRAIL small right arrow
	S6L	TO NORTH CANON TRAILHEAD small up arrow
	S6	SPT up arrow
	S6L	TO GRANDVIEW TRAIL up arrow
	S3	TRAIL CROSSING
	S9	TRAIL CROSSING
12.F.b	S12	STOP
	S12	SPT up arrow
	S12L	TO NORTH KINNIKINICK TRAIL up arrow
	S3	TRAIL CROSSING
	S9	TRAIL CROSSING
	S6	STOP
12.G.a	S6	NKT up arrow
	S6L	TO PALMER POINT TRAIL up arrow
	S3	TRAIL CROSSING
	S9	TRAIL CROSSING
	S12	STOP
	S12	NKT up arrow
12.G.b	S6	STOP
	S3	TRAIL CROSSING
	S9	TRAIL CROSSING
	S12L	TO NORTH KINNIKINICK TRAIL up arrow

Completed

- Bluestem Prairie Open Space
- High Chaparral Open Space
- Rock Island Open Space
- Stratton Open Space
- Cresta Open Space
- Blodgett Open Space
- Palmer Park
- Northern Return Trail
- Chamberlain Trail (NCCP)
- Daniels Pass Trail
- Sweetwater Canyon Trail

In Progress

- Ute Valley Park
- Austin Bluffs Open Space
- Red Rock Canyon Open Space
- North Cheyenne Cañon Park



Future Needs

- Blodgett Open Space – Master Plan Implementation
- Fishers Canyon Open Space – Master Plan Implementation
- Bear Creek Park
- Garden of the Gods Park ?





Wayfinding Costs

- Smaller /less developed OS \$3,000- \$7,000 ea
- Palmer Park \$132,000*
- Blodgett Open Space \$19,500
- Stratton Open Space \$56,000
- Red Rock Canyon Open Space \$89,000
- Ute Valley Park \$48,000*
- Austin Bluffs Open Space \$60,000
- North Cheyenne Cañon Park \$45,000*

Welcome and Kiosks costs

- Most significant project costs
- Welcome signs up to \$14,500
- Kiosks to be determined, worked to reduce

Current balance

- Through Oct 2023 – Balance \$312,943

* Funding in addition to TOPS Open Space Sunds



QUESTIONS

Thank you!

AUSTIN BLUFFS OPEN SPACE

Master Plan
Implementation Update

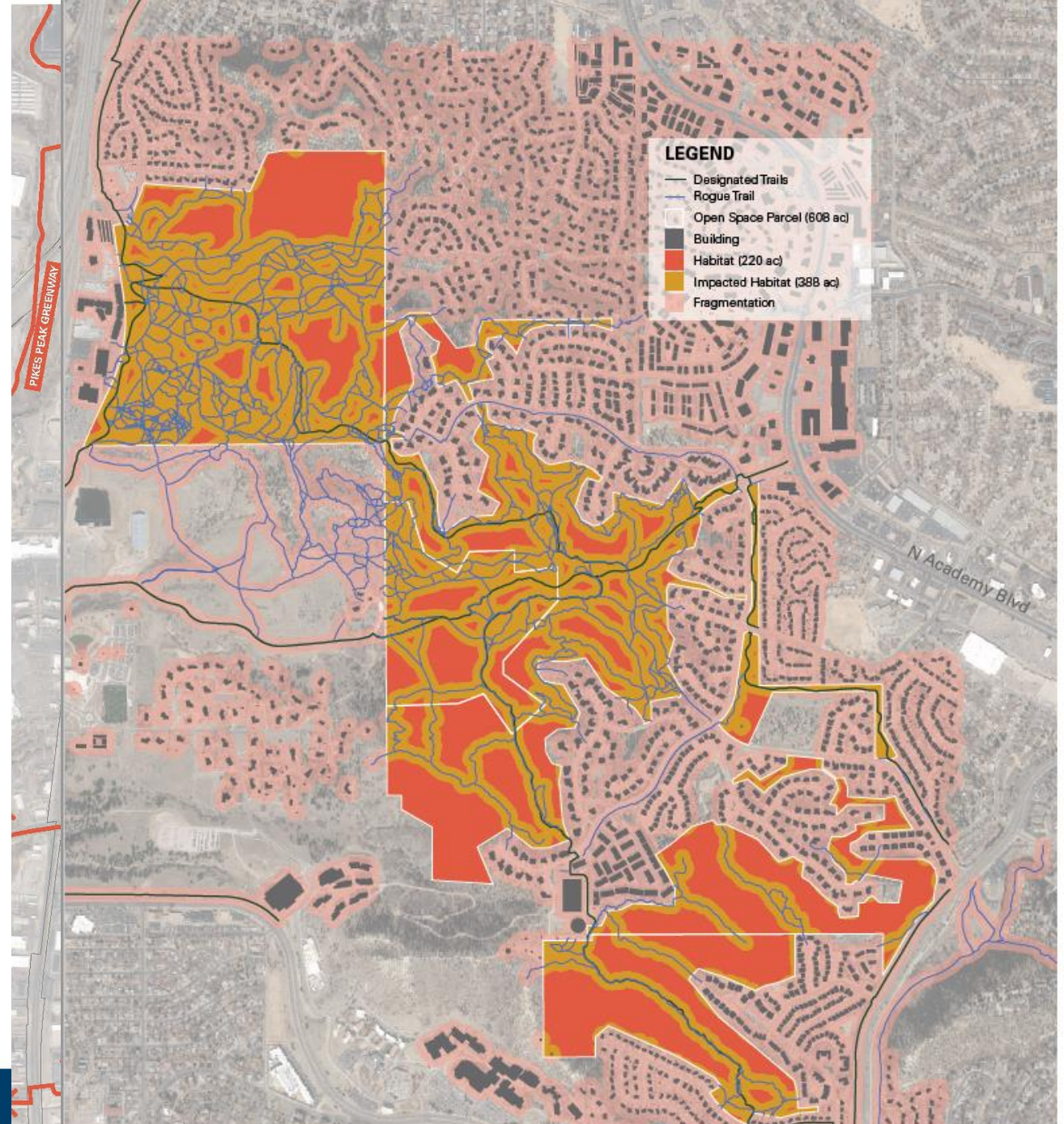


11/01/23

David Deitemeyer – Design and Development

AUSTIN BLUFFS OPEN SPACE

- 600 ac interconnected open space
- High value natural and cultural resources
- High social use on a rogue trail system –
 - 33 miles trail
 - 6 miles designated and 27 miles rogue
 - 130 access points into open space
- Master plan process
 - Fall 2018 thru Spring 2020
- Approved and adopted in summer 2020



AUSTIN BLUFFS OPEN SPACE

- Develop management practices that **protect and preserve** the natural and cultural significance of the open space
- Using sustainable design and decision making practices, **develop a trail system** that supports current and future recreation
- Plan for recreation users and uses that **complement** the natural environment
- **Protect** high quality habitat by providing buffers from trail uses
- Develop forest restoration and **forest health strategies**
- **Explore partnerships** and connection opportunities with University of Colorado, Colorado Springs



AUSTIN BLUFFS OPEN SPACE



Trail management and Maintenance

- Implement sustainable trail system
- Provide well-connected, designed and built trails to reduce rogue trail development
- Drainage improvements and restoration

Noxious Weed Management

- Minimize new disturbance
- Actively restore and revegetation closed trails
- Routine Monitoring

Wildlife Habitat Protection

- Minimize new trails in high value habitat areas
- Aggressively close and reclaim rogue trails
- Maintain and protect blocks of undistributed habitat in Natural Preservation Areas

AUSTIN BLUFFS OPEN SPACE

Forestry Management

- Implement forest restoration including timber stand improvement, dwarf mistletoe control and fuels mitigation
- Monitor and maintain treatment areas

Archeological Resource Protection

- Avoid know archaeological sites
- Monitor condition of sites
- Provide interpretive signs are trailheads

Education and Enforcement

- Educate visitors on closures and reclamation efforts
- Convey the rich cultural history
- Develop Ranger presence and enforce violations
- Remove and eliminate encroachments on the open space



AUSTIN BLUFFS OPEN SPACE

Access

- Trailheads, Designated neighborhood access points, easements for critical connections

Trail system

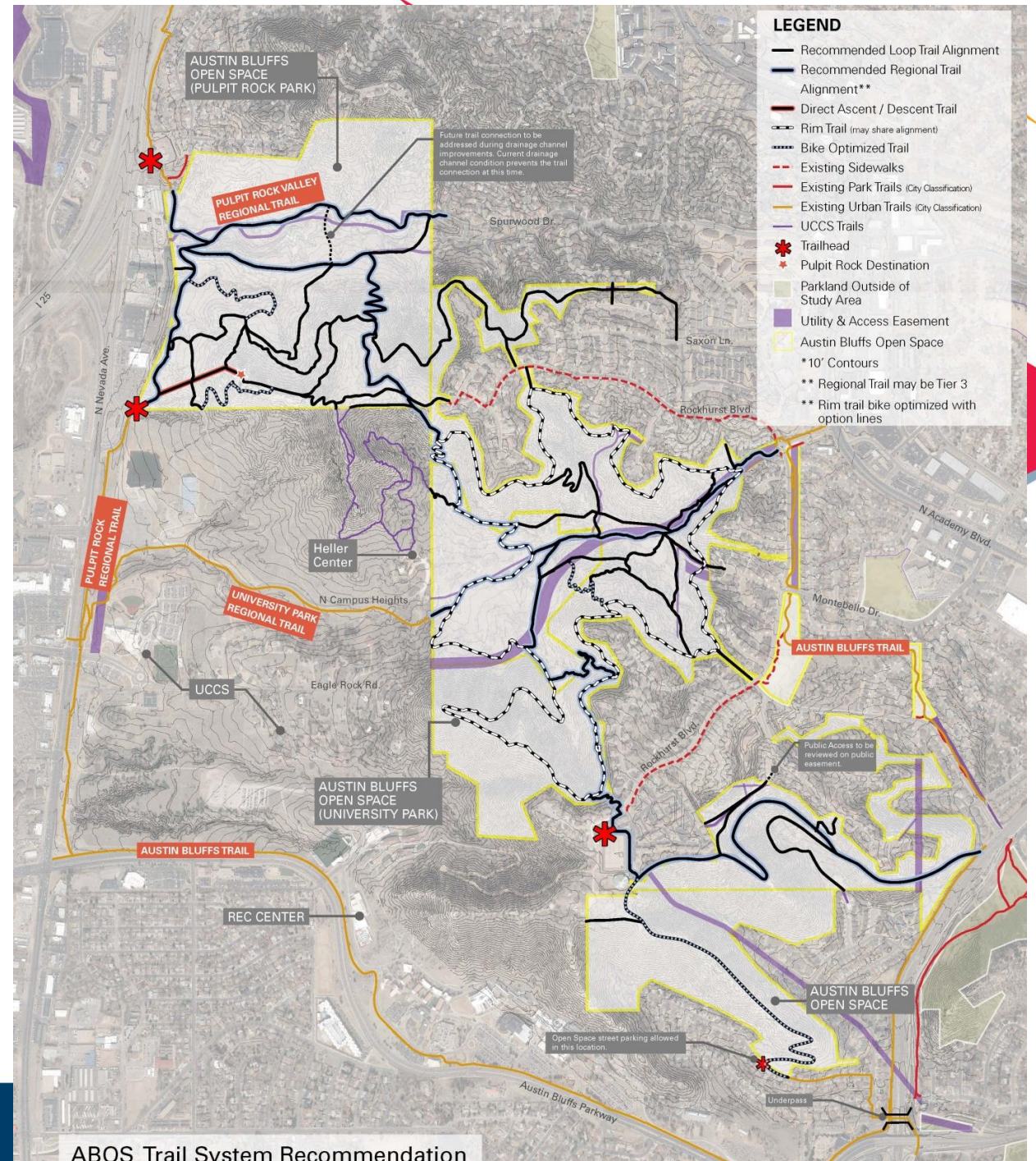
- Purposed built system
- Connections, loops and regional trails
- Bike optimized and single use

Pulpit Rock area

- Multi use Summit Trail
- Bike only trail
- Hiking only trail
- Open Space Restoration – “Block Closures”

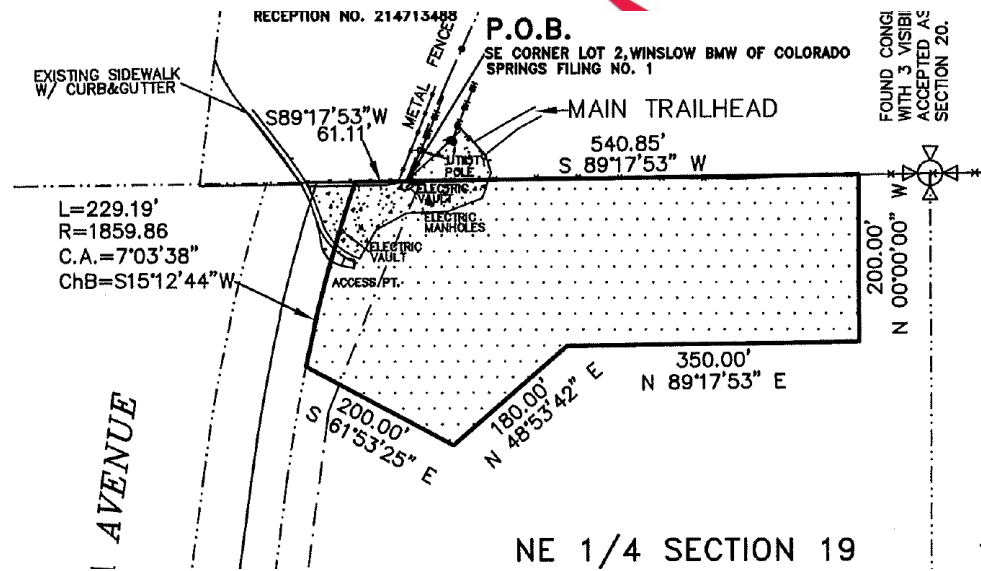
Open Space Signage and amenities

- Wayfinding Guidelines
- Keep natural and appropriate for the open space



AUSTIN BLUFFS OPEN SPACE

- Formalize and Expand the south lot
- Reorganize and expand the north lot
- Easement Acquisition from UCCS
 - Trailhead expansion
 - Trail easement along Spine and Rim Trail
- Unsuccessful State Trails Grant pursuit in 2023



AUSTIN BLUFFS OPEN SPACE



A Truly Collaborative Effort

- Staff lead trail building and restoration
- Trail Building Contractors
- RMFI Staff
- Volunteers for Outdoors Colorado
- Volunteer support projects
- Community Advocacy Groups
- Medicine Wheel Trail Advocates
- COSMBA



AUSTIN BLUFFS OPEN SPACE



Trail Accomplishments Since 2020

10.6 Miles new construction and reroute (multi-use) completed

0.5 miles of Directional Bike Only Trail

8.25 Miles of Rogue Trail Closure

Current Trail System

19.5 Miles of Designated Trails (89% completed)

13.7 miles of interconnected trails in the area (Regional Trails leading into open space)

Final Trail System

22 Miles of Designated Trail (Close to completion in 2024)



NORTH

AUSTIN BLUFFS
OPEN SPACE
(PULPIT ROCK PARK)

PULPIT ROCK VALLEY
REGIONAL TRAIL

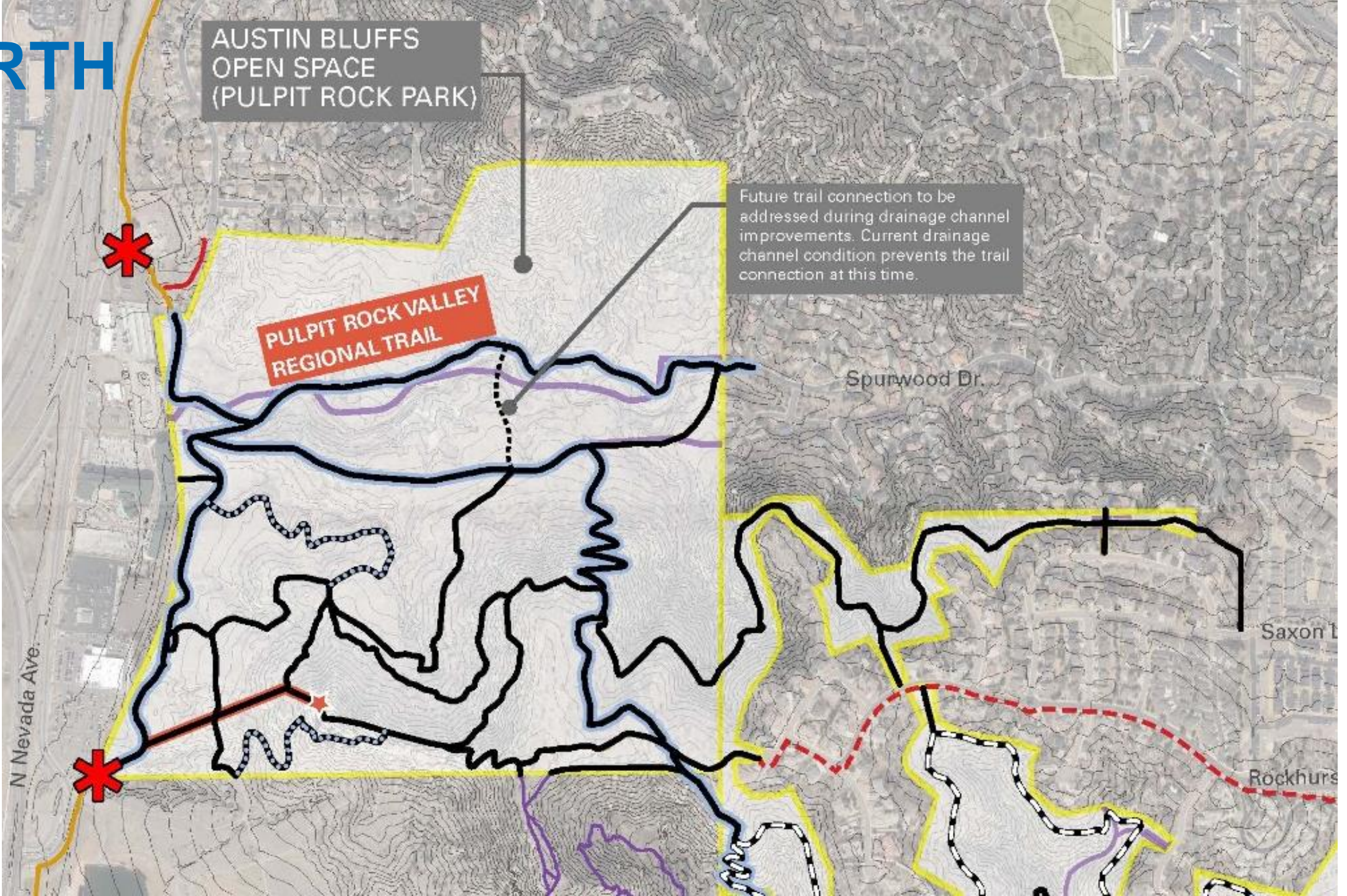
Future trail connection to be
addressed during drainage channel
improvements. Current drainage
channel condition prevents the trail
connection at this time.

Spurwood Dr.

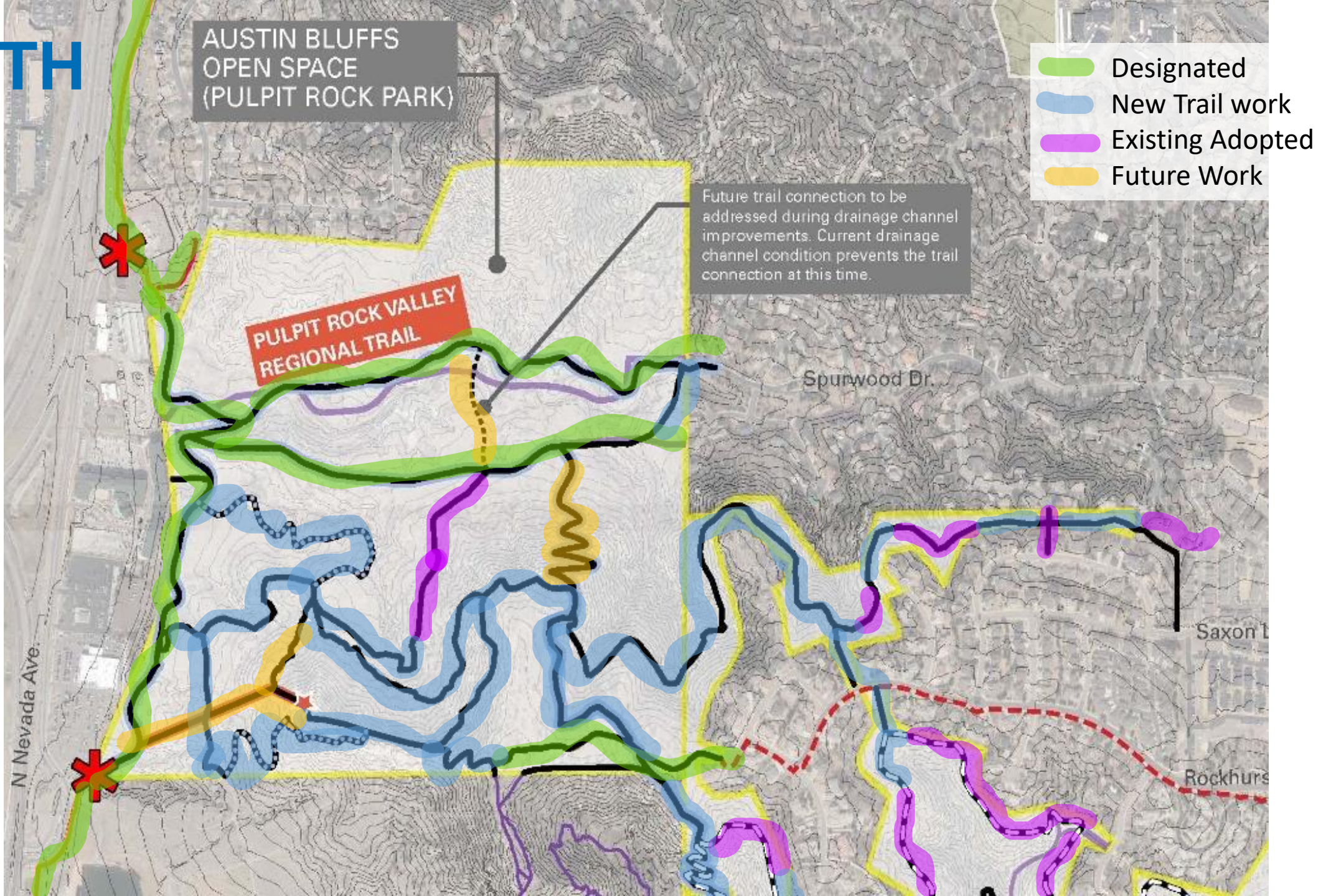
Saxon L

Rockhurs

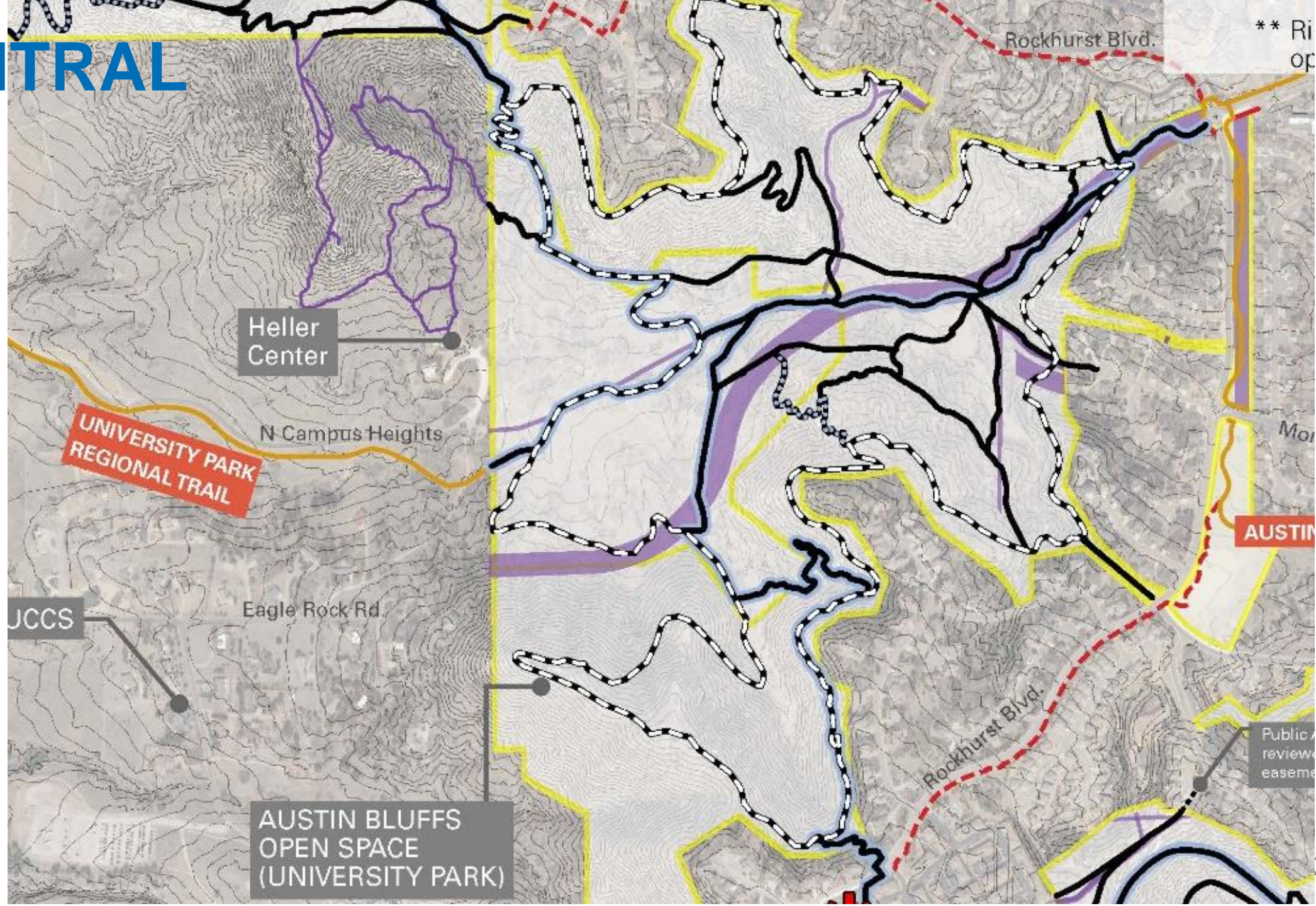
N Nevada Ave.



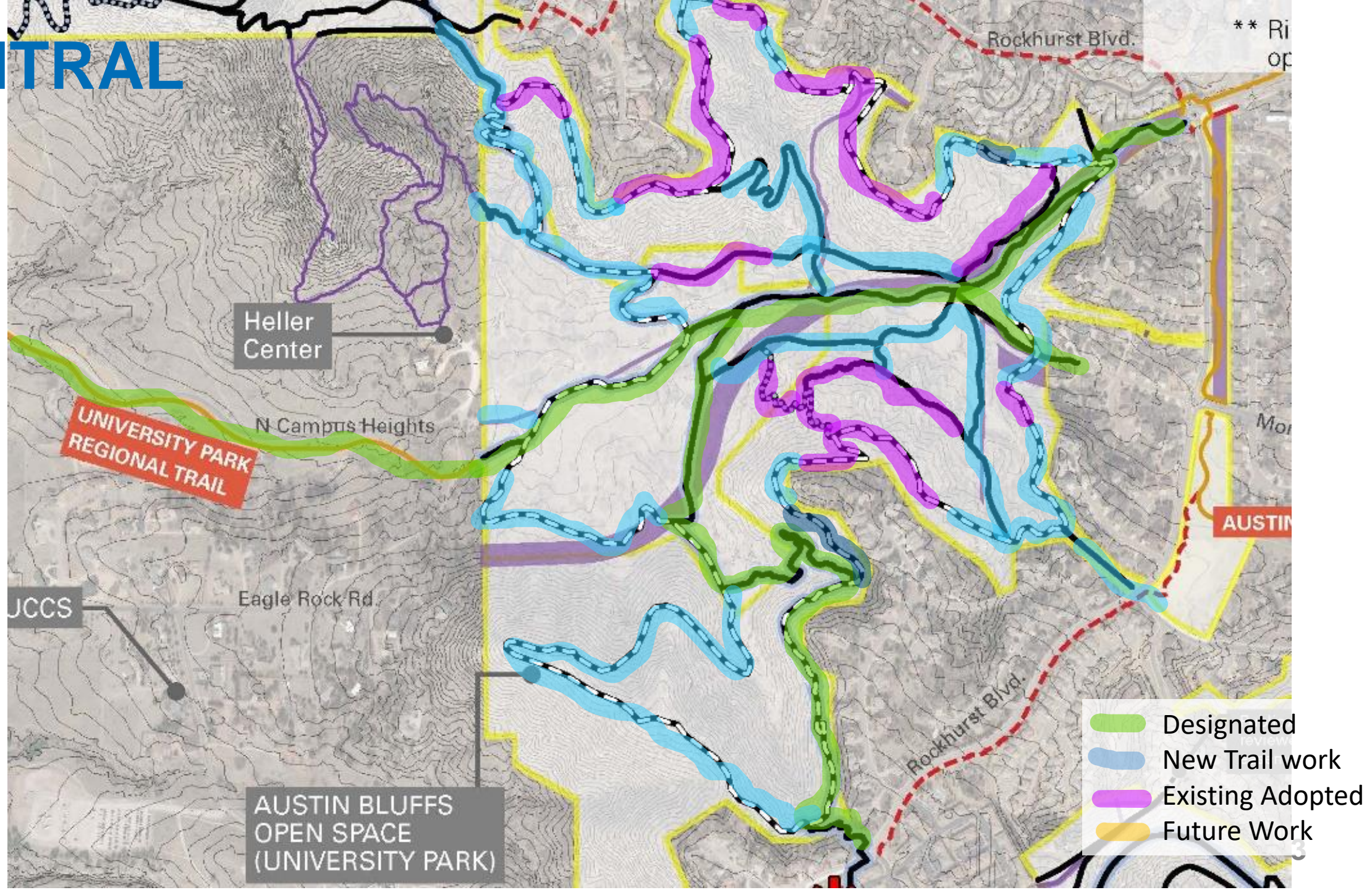
NORTH



CENTRAL



CENTRAL



SOUTH

AUSTIN BLUFFS
OPEN SPACE
(UNIVERSITY PARK)

Public Access to be
reviewed on public
easement

Rockh...



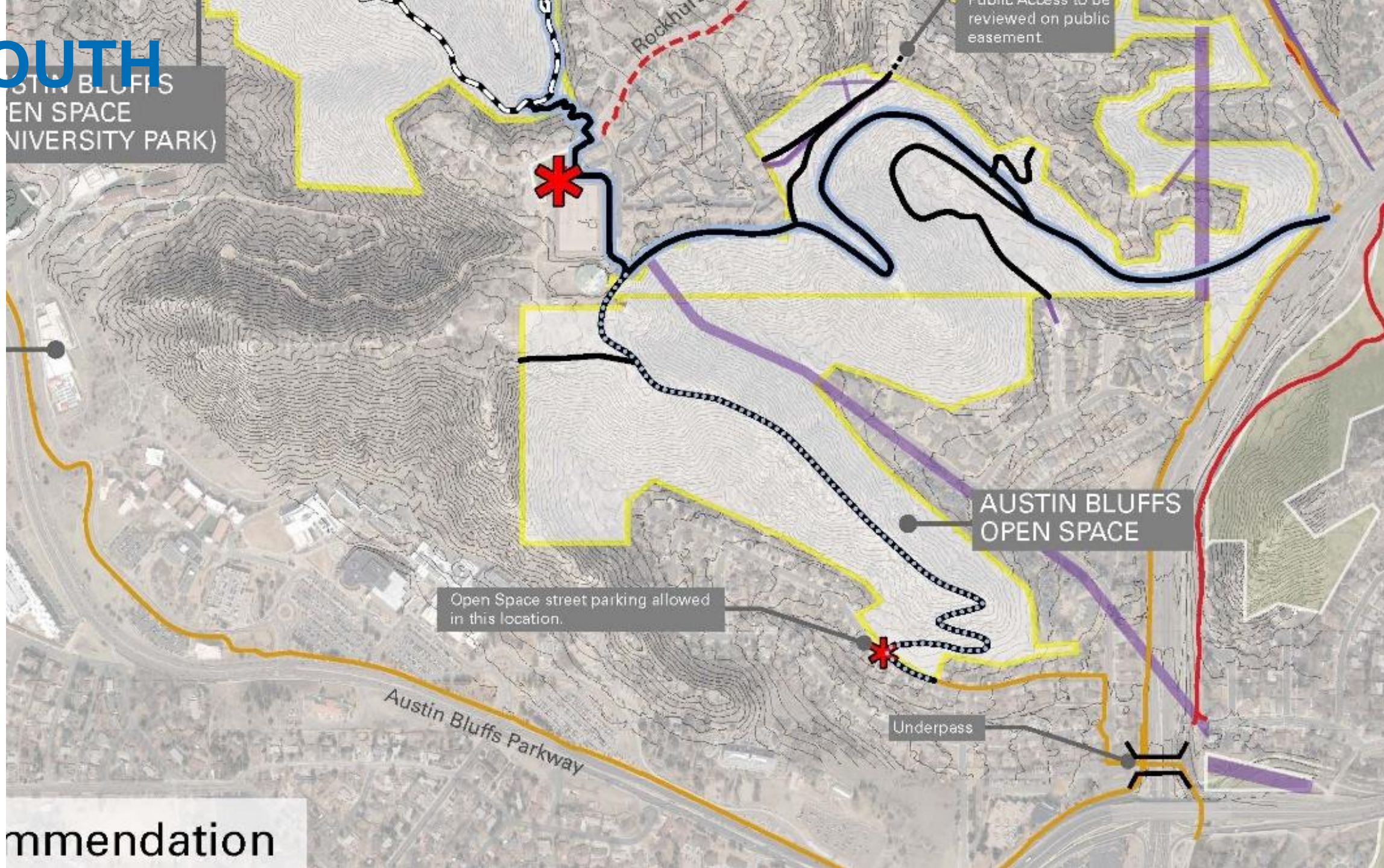
AUSTIN BLUFFS
OPEN SPACE

Open Space street parking allowed
in this location.

Underpass

Austin Bluffs Parkway

mmendation



SOUTH

AUSTIN BLUFFS
OPEN SPACE
(UNIVERSITY PARK)

Public Access to be
reviewed on public
easement

Rockh...



AUSTIN BLUFFS
OPEN SPACE

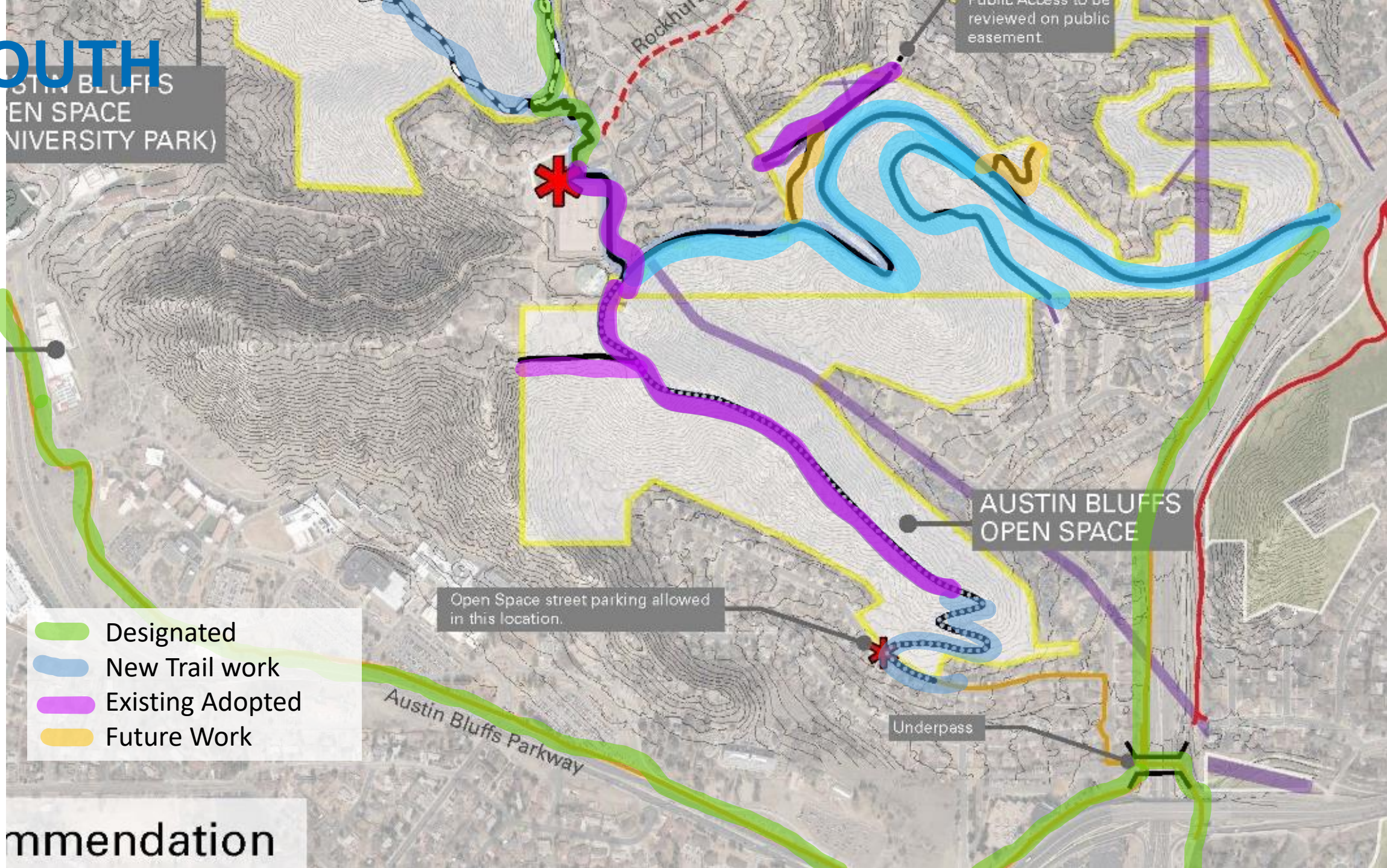
Open Space street parking allowed
in this location.

- Designated
- New Trail work
- Existing Adopted
- Future Work

Underpass

Austin Bluffs Parkway

mmendation







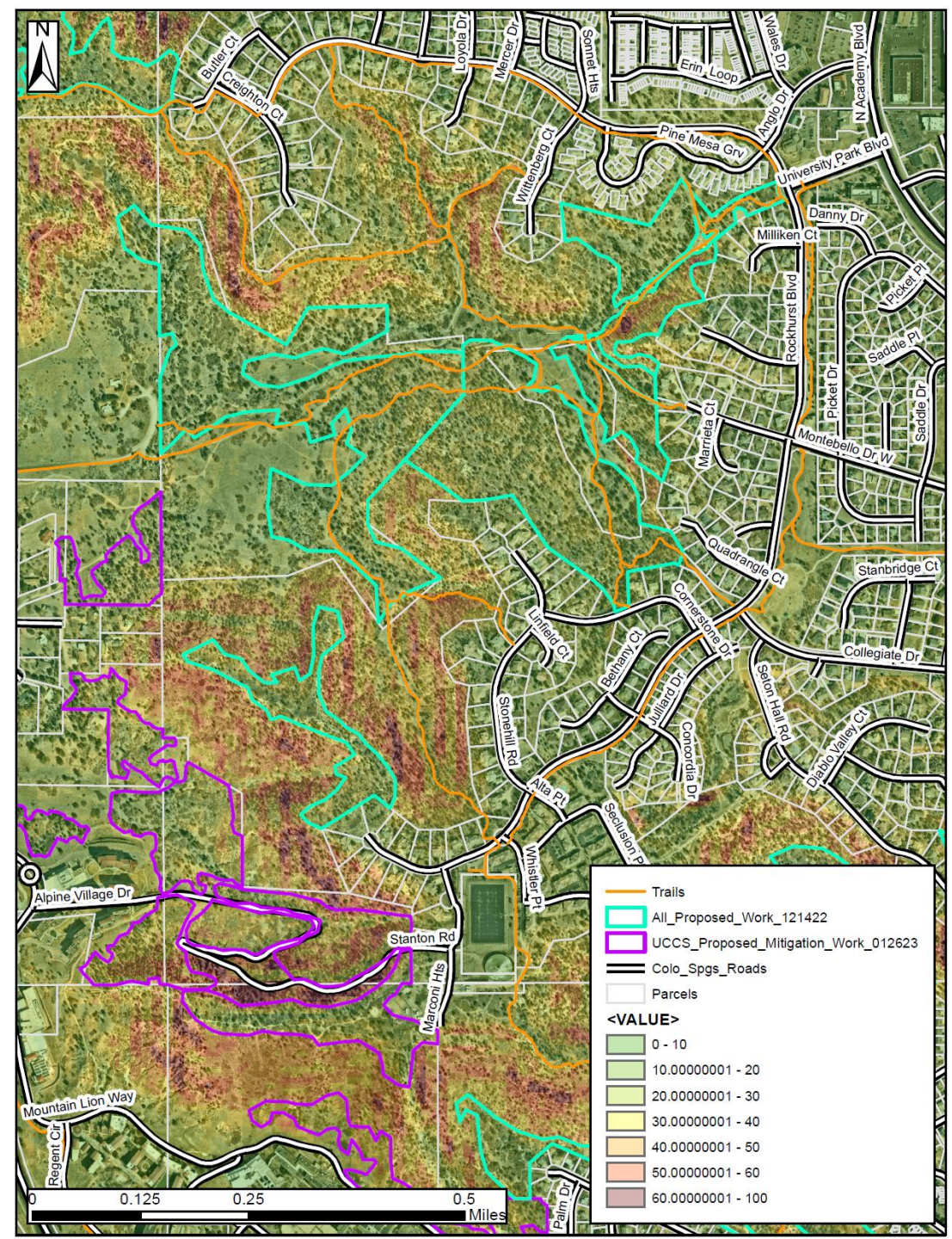






AUSTIN BLUFFS OPEN SPACE

- Expanding on work done by City Fire and City Forestry since 2013
- 8 acres completed in Spring in 2023
- Planned treatment of 50-70 acres, working in concert with UCCS on their properties
- Upcoming work Funded by 2D TABOR Wildfire Mitigation



AUSTIN BLUFFS OPEN SPACE

600-Acre Open Space will be signed.

20+ mile trail system will be signed.

Trailhead kiosk will be considered as budget allows

Wayfinding benefits include:

- Sense of place
- Concise messaging
- Discourages social trails
- Improved navigation and user experience
- Critical for emergency and first responders
- Maintenance needs and reporting issues



AUSTIN BLUFFS OPEN SPACE

Trailhead work

- South Trailhead at Austin Bluffs Expansion

Trail Development

- Spine Trail completion (north and south segments)
- Enlightenment Hiking Only Trail at Pulpit Rock
- UCCS Trail Connectivity
- University Regional Trail Improvements

Forest Management

- Forest Restoration and Fuels Mitigation
- Collaboration with UCCS parcels

Land Management

- Friends Group Creation
- Site Specific Issues and Opportunities
 - Trail improvements and small reroutes
 - Rogue Trail Closures





© Bob Falcone

THANK YOU

STARKES
OLYMPIC CITY USA

FISHERS CANYON OPEN SPACE MASTER PLAN INTRODUCTION



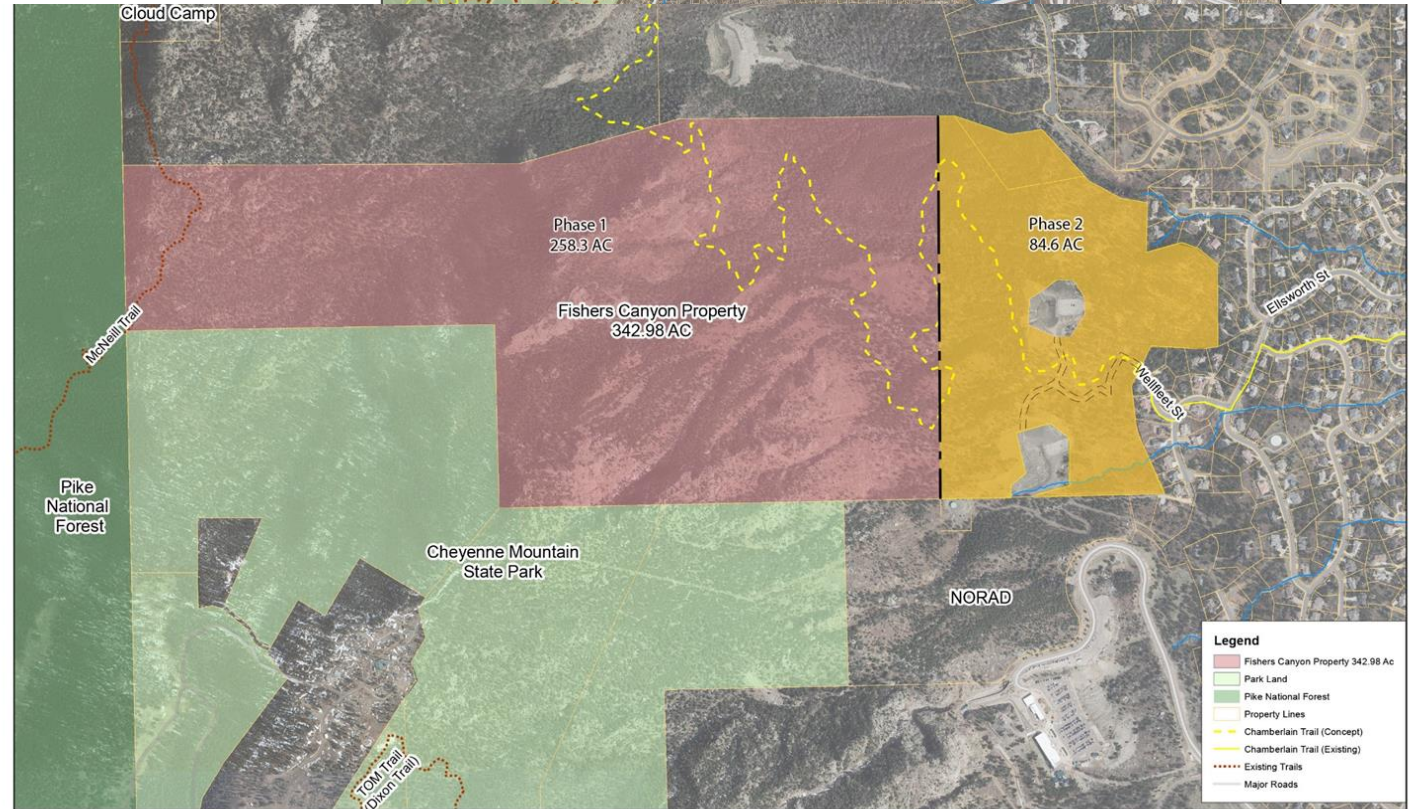
Tops Working Committee


Nov 1, 2023

David Deitemeyer – Parks, Recreation and Cultural Services

FISHERS CANYON OPEN SPACE

- 342.98 acres adjacent to Cheyenne Mountain State Park
- Property was nominated for acquisition by the Trails and Open Space Coalition
- Last legal impediment to completing the Chamberlain Trail.
- Seamless Landscape scale conservation and recreational access
- 2-Phase Acquisition (Nov 2021/Mar 2022) from The Conservation Fund
- Purchase Price of \$4,000,000
- Land Water Conservation Fund grant award of \$1,250,000



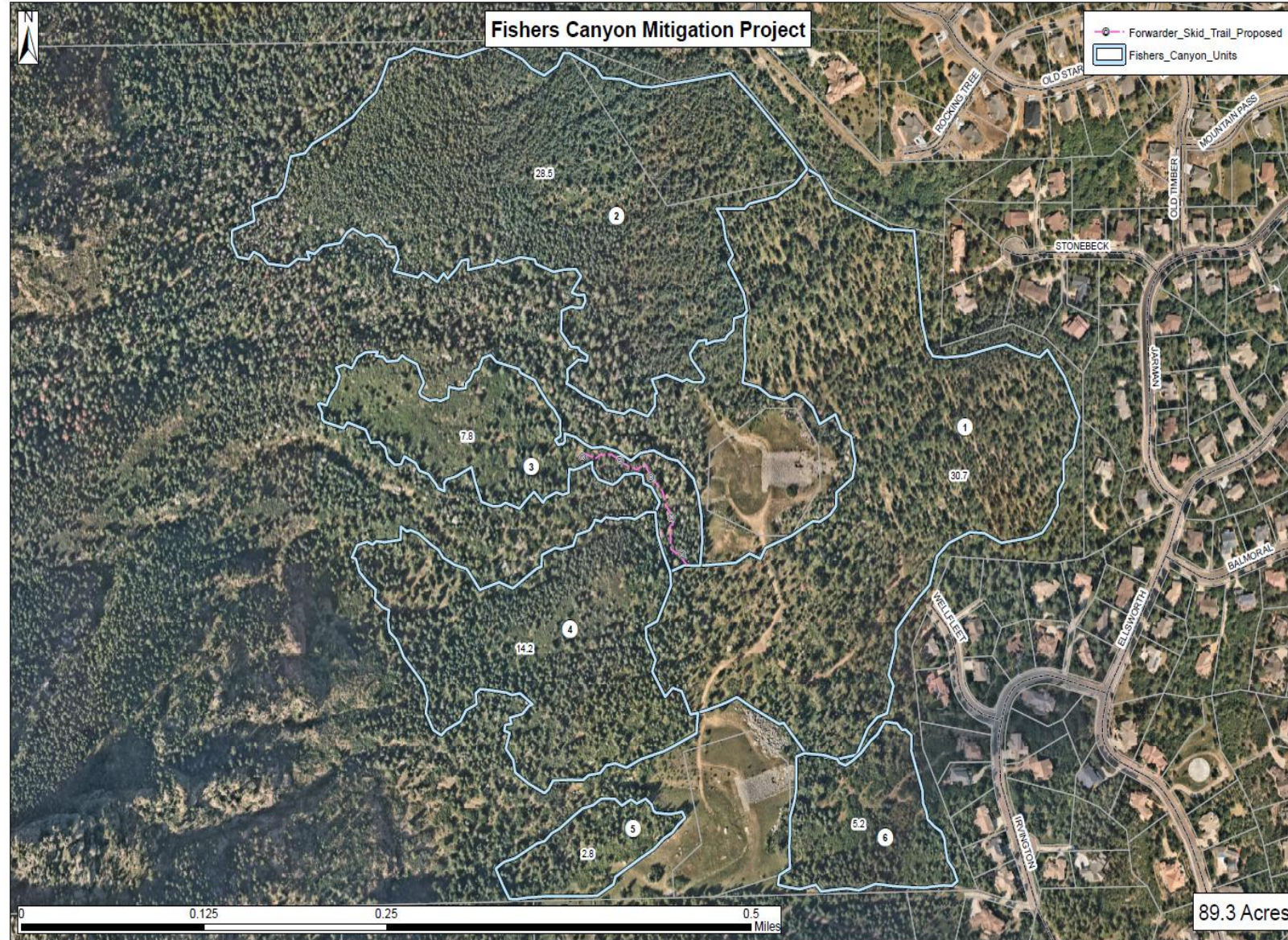
 Fishers Canyon Property Site Map



 Fishers Canyon Property Vicinity Map

FISHERS CANYON OPEN SPACE

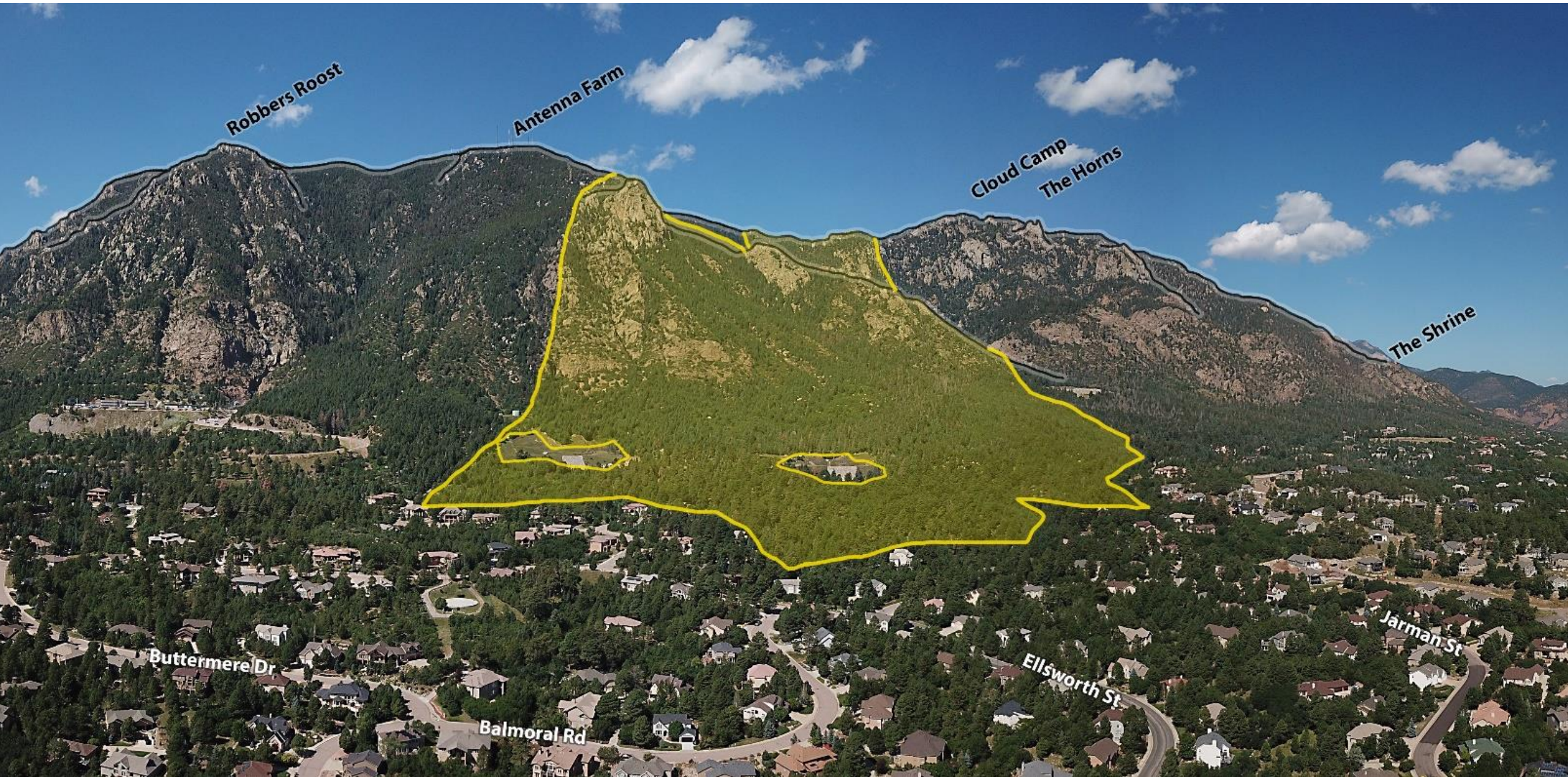
- 89.3 Acres Treated
- December 2022 thru April 2023
- Wildfire Mitigation Committee #1 Priority
- Funded in partnership with TOPS, CSU, and the 2D TABOR Mitigation funds (\$510,000 project)
- Reduction of wildfire risk, improved habitat, protection of critical infrastructure, and erosion prevention
- Additional grant requests for hand thinning in drainages, and invasive weed management in 2024/25.



FISHERS CANYON OPEN SPACE



Fire Mitigation – Before and Right after



Robbers Roost

Antenna Farm

Cloud Camp
The Horns

The Shrine

Buttermere Dr

Balmoral Rd

Ellsworth St

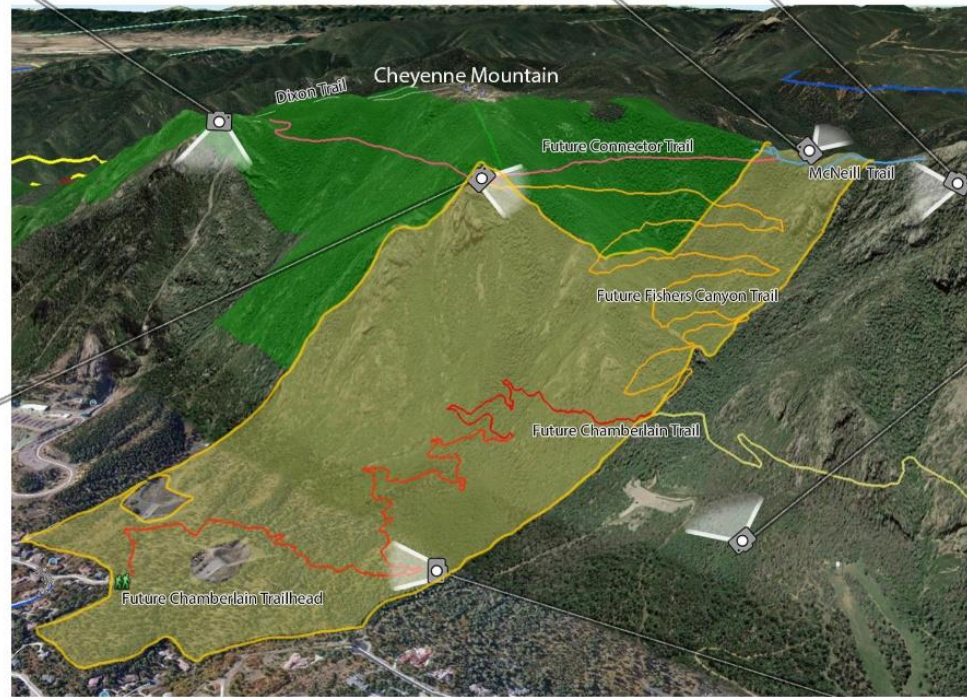
Jarman St



**Cheyenne Mountain
State Park**

Robbers Roost

Antenna Farm



Fishers Canyon Conceptual Trail Planning
Looking Southwest
Note: Property Shown in Yellow Highlight



PLANNING TEAM



CITY OF COLORADO SPRINGS

PARKS ADVISORY BOARD

PARKS, RECREATION AND CULTURAL SERVICES DEPARTMENT

STUDIO CAMPO

Project Management Open Space Planning, Conceptual Site Design, Recreation Planning, Master Plan Delivery, PR & Public Process

LEAD: AMANDA JETER

GEI CONSULTANTS

Trail Design, Cultural, Natural Resource & Environmental Science Management Planning, Wildfire Mitigation, Restoration Ecology & Engineering

LEAD: LUCY HARRINGTON

ATKINS ENGINEERING

Traffic Analysis & Trailhead Conceptual Design Support

LEAD: WILL KERNS

STUDIO CAMPO

Role: Project Management, Open Space Planning & Public Outreach

FIRM HISTORY

Studio Campo is a full-service landscape architecture, engagement and planning firm, founded in 2019 in Denver, CO. The firm takes a research-driven approach with biodiversity and ecological stewardship as cornerstones of practice. The firm works on a wide range of projects including farms, parks and open spaces, education centers, and hospitality spaces. IAP2 facilitators and engagement strategists, Studio Campo is woman-owned and certified as a MWBE and SBE with the City and County of Denver.

GEI CONSULTANTS

Role: Trail Design Planning, Wildfire Mitigation, Cultural & Natural Resource Management

FIRM HISTORY

GEI Consultants, Inc. (GEI) is comprised of professionals well-versed in habitat restoration, natural resources management, and environmental permitting. Our team specializes in collecting and interpreting highly technical data into restoration and mitigation plans, regulatory permits, and water quality improvement goals. Additionally, GEI's staff has worked on pre- and post-wildfire mitigation planning and implementation and sediment transport studies focused on erosion control and reduction.

ATKINS ENGINEERING

Role: Sub-consultant to GEI-Traffic Impact Study & Trailhead Conceptual Design

FIRM HISTORY

Atkins has a wealth of experience working with clients in Colorado, across the country and around the world to develop trail and multimodal infrastructure. Our trails team at Atkins is focused on healthy community design. We think that trails should connect people to key places, fresh food, and provide access regardless of neighborhood or income level. Trails provide an increased sense of community, active transportation/recreation, opportunities for storytelling, and education about community history.

APPROACH SUMMARY

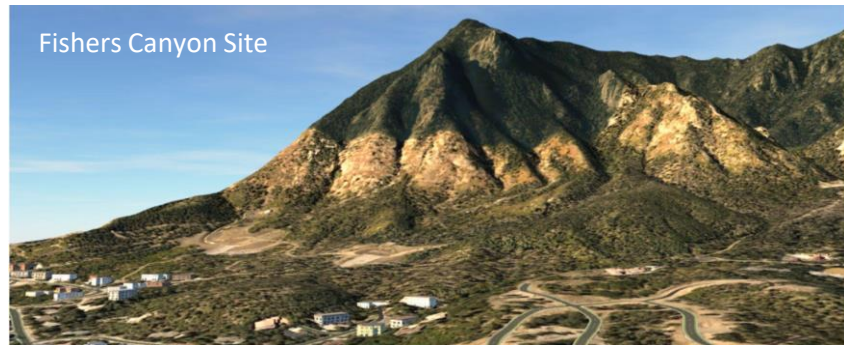


APPROACH STEPS	FISHERS CANYON EXAMPLE
1-Identify Opportunities & Constraints	Regional Trail Connections, Cheyenne Mountain - Steep topography w/ rocky outcrops, Mexican Spotted Owl Habitat, etc.
2-Select Appropriate Trail Design Standards & Best Practices	Sustainable design standards for steep slopes, specialized construction techniques, etc.
3-Identify User Group Needs & Desired Experiences	Parking at trailhead, pet station(s), interpretive signage, trash enclosure, neighborhood traffic issues, etc.
4-Create & Evaluate Trail Alignment Alternatives	Along with stakeholder & public input, key data on indigenous flora & fauna, trail planning team will use field recon time for conceptualizing a high-quality, sustainable trail system and conceptual Wellfleet trailhead design.

PLANNING TOOLS

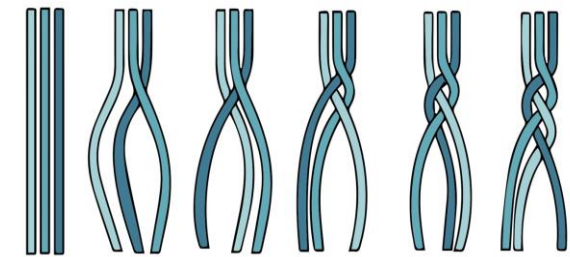
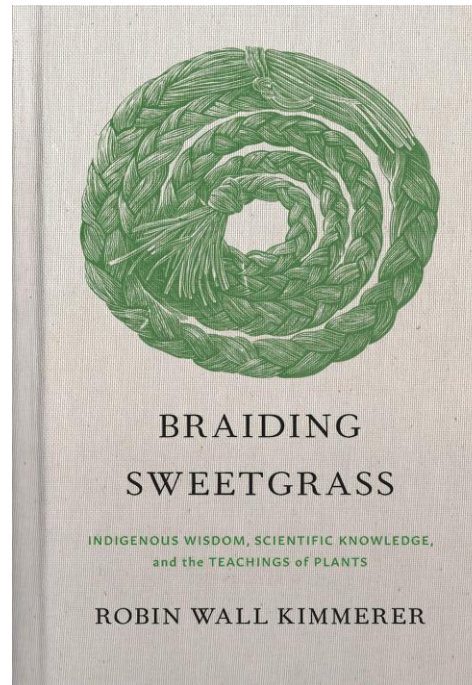
ANALYSIS & VISUALIZATION TECHNOLOGY

The team is able to quickly combine a 3D model of the of the project site with GIS data such as soils data, slope analysis, aspect plant communities, nesting sites, surrounding park data, and roads. Proposed trail locations can be added to this 3D model to illustrate potential opportunities and constraints.



ENGAGEMENT APPROACH

- Follow **International Association of Public Participation (IAP3)** best practices
- Identify decision-making
- Provide clear **”windows” of public engagement**
- Report on what we heard and **how we are using input**
- **”Braid”** technical information with community input into a synthesized plan



“Braiding Sweetgrass” as inspiration and metaphor for the plan process

ENGAGEMENT TACTICS

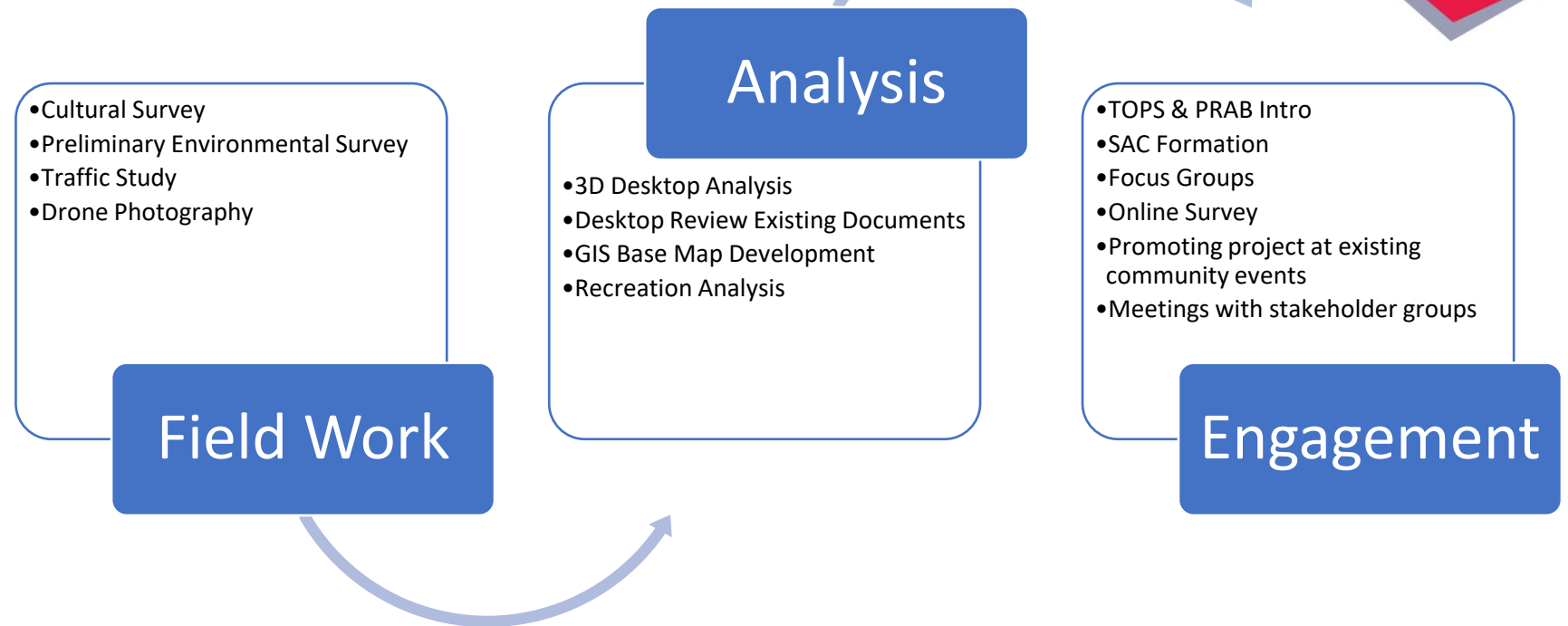
- **Convene coordination meetings with Staff, TOPS Working Committee, Stakeholder Action Committee (SAC).**
- **Organize Focus Groups** to discuss key issues with **representatives from varied perspectives** (e.g., PRCS Staff, Medicine Wheel Trail Advocates, NORAD, Cheyenne Mountain State Park, Homeowner's Association, etc.).
- **Invite youth participation** focused on Cheyenne Mountain, Fort Carson and Harrison School District population (e.g., Youth Member of SAC).
- **Meeting community where they are** including piggybacking on existing events at PRCS Community Centers.
- **Traditional public meetings** with members of the consultant team to help answer technical questions.
- **Online surveys** that focus questions on what the public can weigh in on (e.g., open space values).
- **Visualization and digital storytelling** to help provide an experience of being on the site.



WHERE ARE WE NOW?

- Task 1: Project Planning
- Task 2: Site Assessment
- Task 3: Env. Survey
- Task 4: Draft Master Plan
- Task 5: Final Master Plan

Next Three Months



THANK YOU



[Coloradosprings.gov/Fisherscanyon](https://coloradosprings.gov/Fisherscanyon)

